

KILLEGRAV 902



Specifications:

3 Bedrooms, 3-1/2 Baths

Heated Square Feet

• Main House	1191
• Crofter Cottage	256
Screened Porch	176
Open Decks	175
Cart Garage	168

EXTERIOR

Windows	Andersen
Siding	Cedar shingles
Roofing	Architectural grade fiberglass shingles

INTERIOR

Entry	Oak floors — natural finish — to include stair treads
Kitchen	Oak floors — natural finish Wood cabinets — choice of styles Formica counter with wood edge trim

GE, White on white appliances, to include range, dishwasher, microwave, 21 cu. ft. refrigerator with icemaker, washer and dryer.

Greatroom

Oak floors — natural finish
Ceiling fan and recessed lighting
Beaded board under breakfast bar

Bedrooms

Carpeted floors
Ceiling fans in all bedrooms

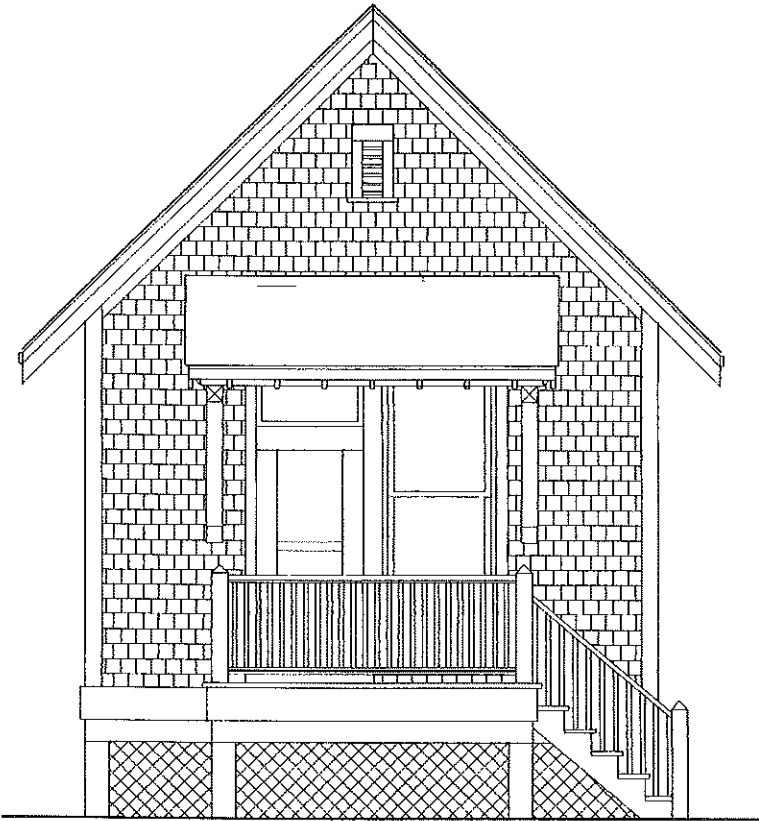
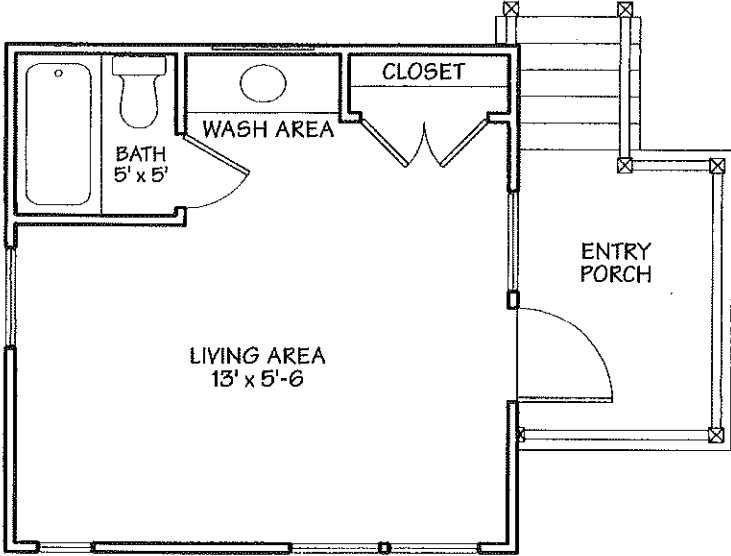
Baths

Ceramic tile floors
Wooden cabinets with cultured marble vanity tops
Tub/shower combinations with curtain rod
Free standing showers to have glass door enclosures

General

Energy efficient two zone heat pump
Quick recovery hot water heater
Screened porch
Duplex cart garage
Single story crofter
Outdoor shower

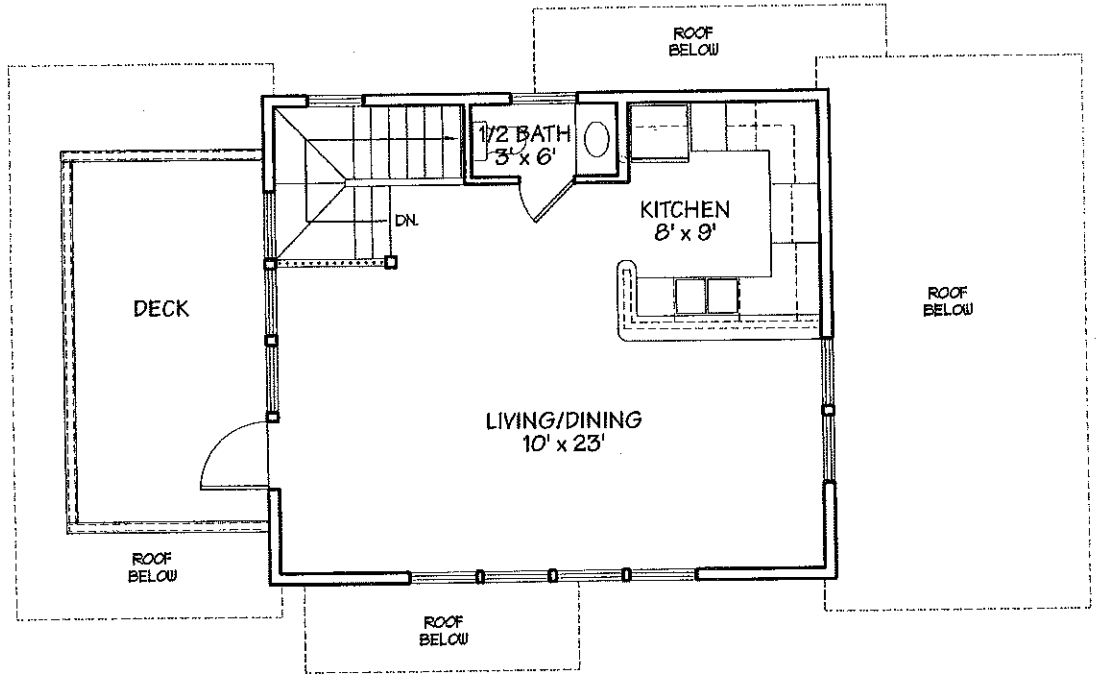
SINGLE STORY CROFTER PLANS FOR KILLEGRAY 902



Single story crofter, entry elevation

FLOOR PLANS FOR KILLEGRAY 902

Second floor



First floor

