

A/C - 1086
Loft - 305
FlA - 152
1,543

IBIS ROOST

IBIS ROOST

Three Bedrooms, Two Baths
1,500 SF Heated
130 SF Covered Porch
130 SF Screened Porch

STANDARD SPECIFICATIONS

Exterior

- ~ Windows - Insulated Aluminum double hung
- ~ Siding - Horizontal cedar lap siding
- ~ Roofing - Architectural asphalt shingles

Interior

- ~ Bathrooms - Sheet vinyl floors, fiberglass tubs, cultured marble vanities, Moen "Chateau" trim
- ~ Kitchen - Sheet vinyl floors, pickled maple cabinets, GE appliances (white).
Appliance list includes 18 cu. ft. refrigerator/freezer with built-in ice maker, trash compactor, dishwasher, range, combination hood and microwave, side-by-side washer and dryer.
- ~ Living and Dining area - carpeted floors (color choices)
- ~ Bedrooms - carpeted floors (color choices)
- ~ General

High efficiency central air conditioning and heat

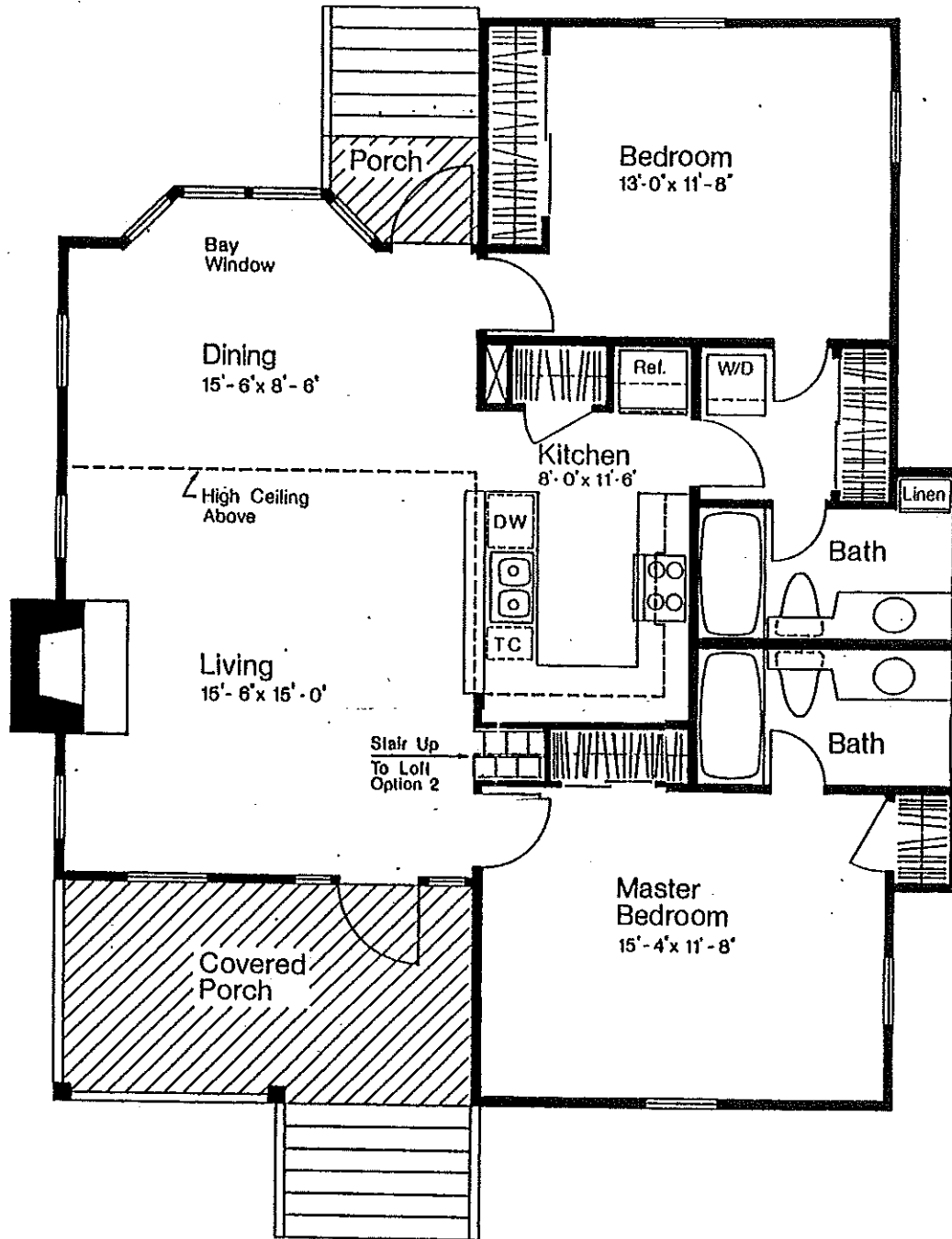
Interior doors - molded four panel doors

Interior paint - two coats, off-white latex with gloss trim

Sitework

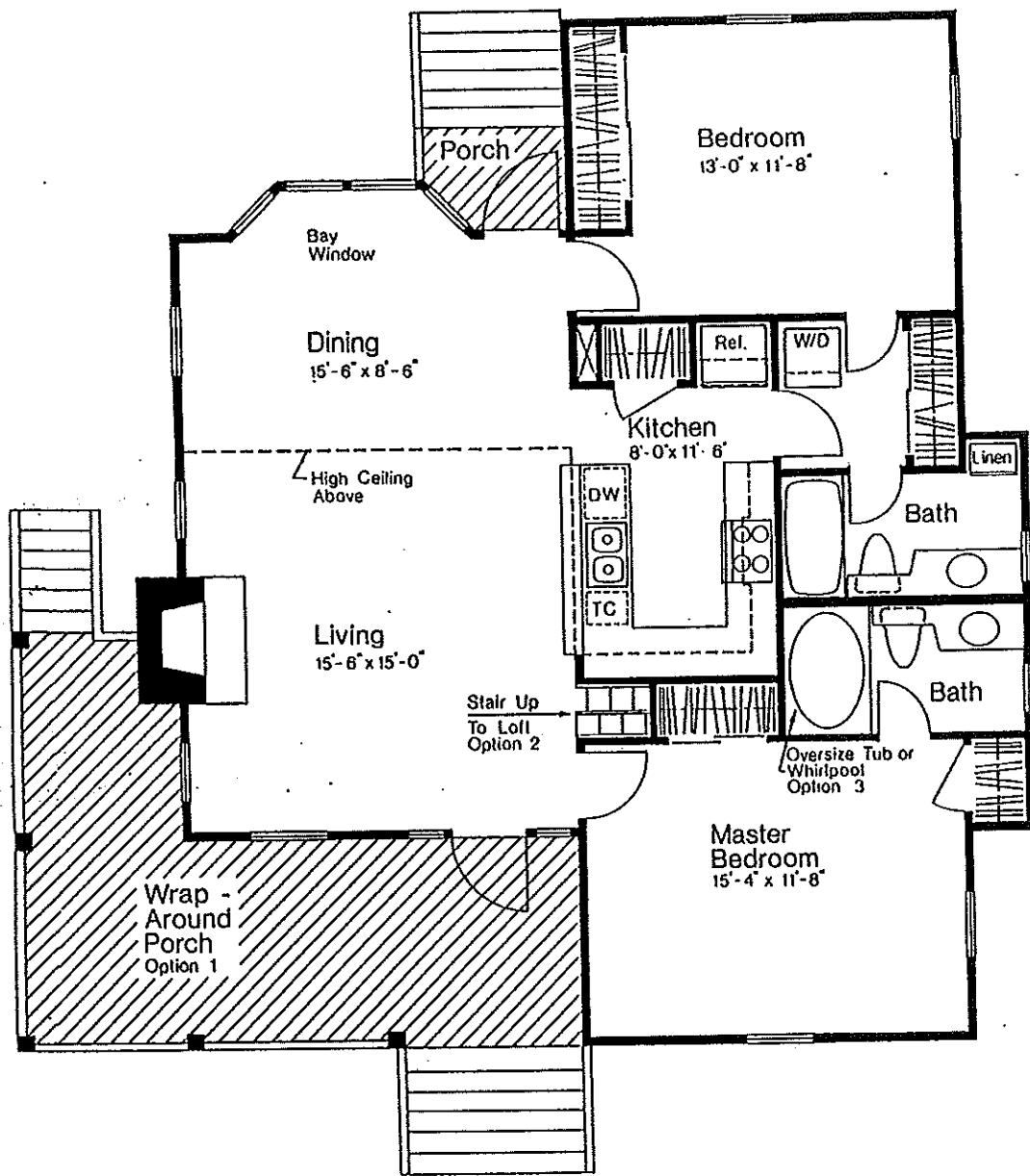
- ~ 120 SF garage/storage
- ~ Painted wood fences
- ~ Wood walks
- ~ Outdoor trash storage

All plans and specifications are preliminary. Changes for improvements may be made at developer's discretion.



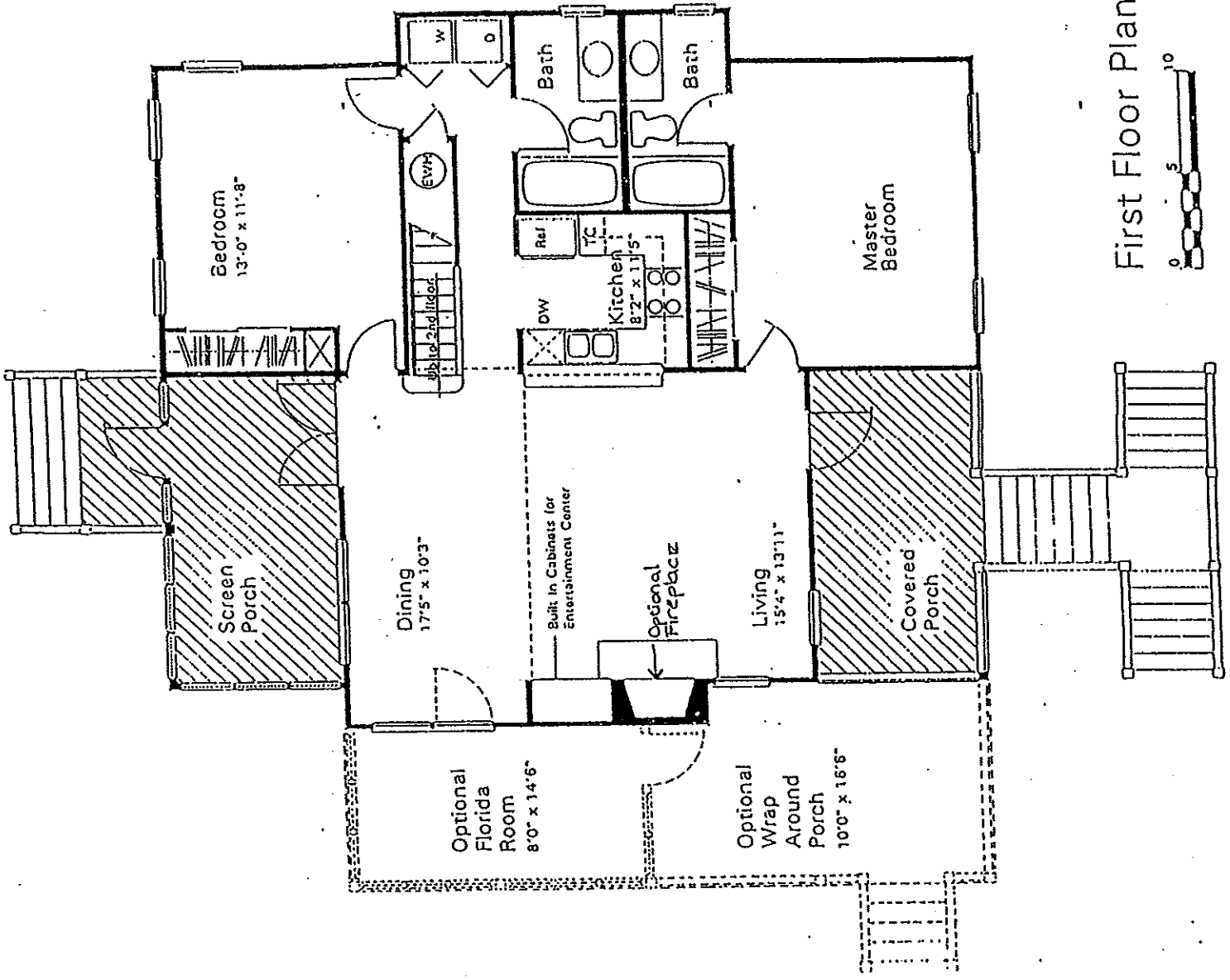
Standard Floor Plan





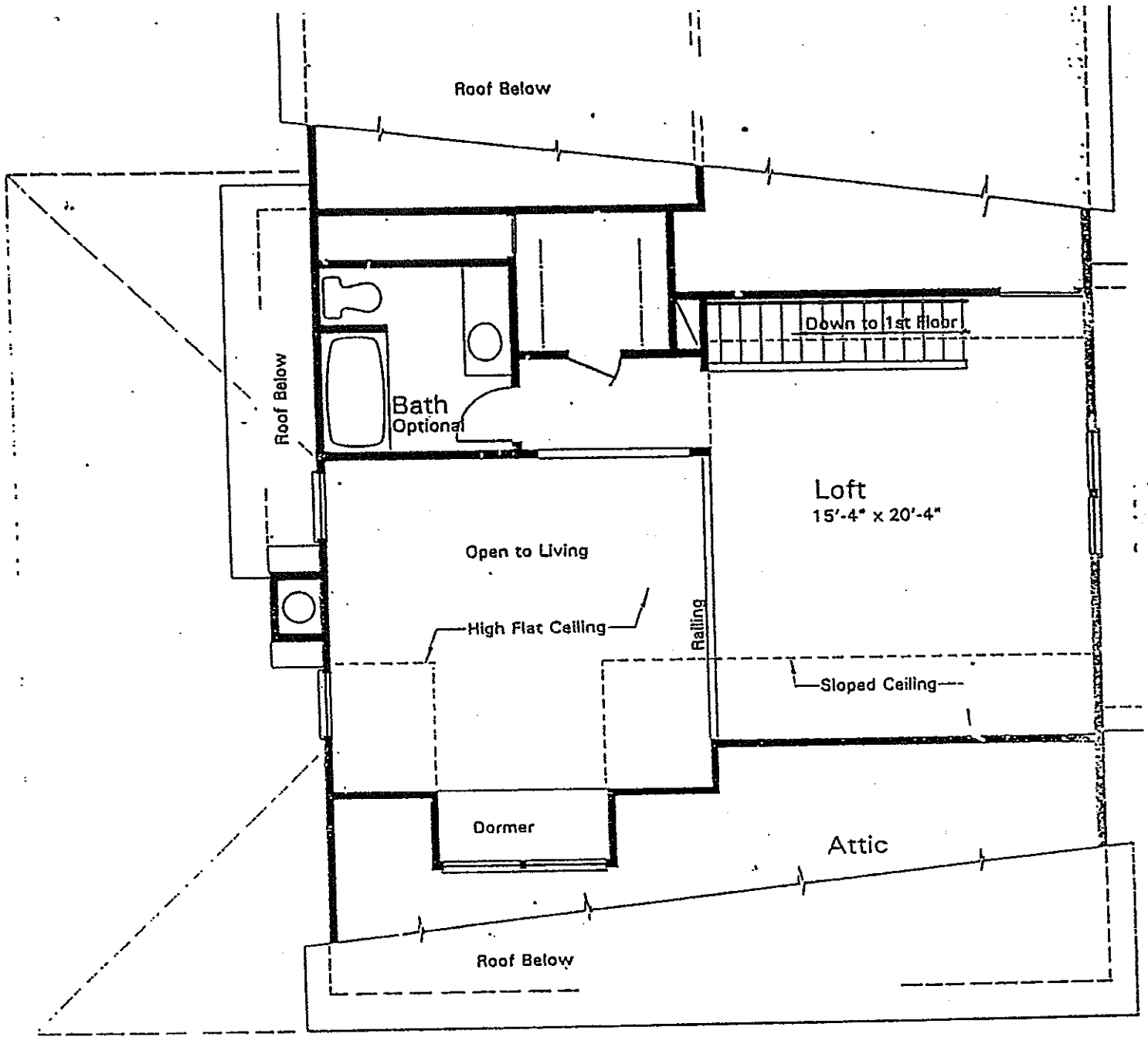
Optional Floor Plan



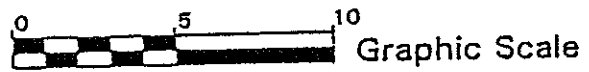


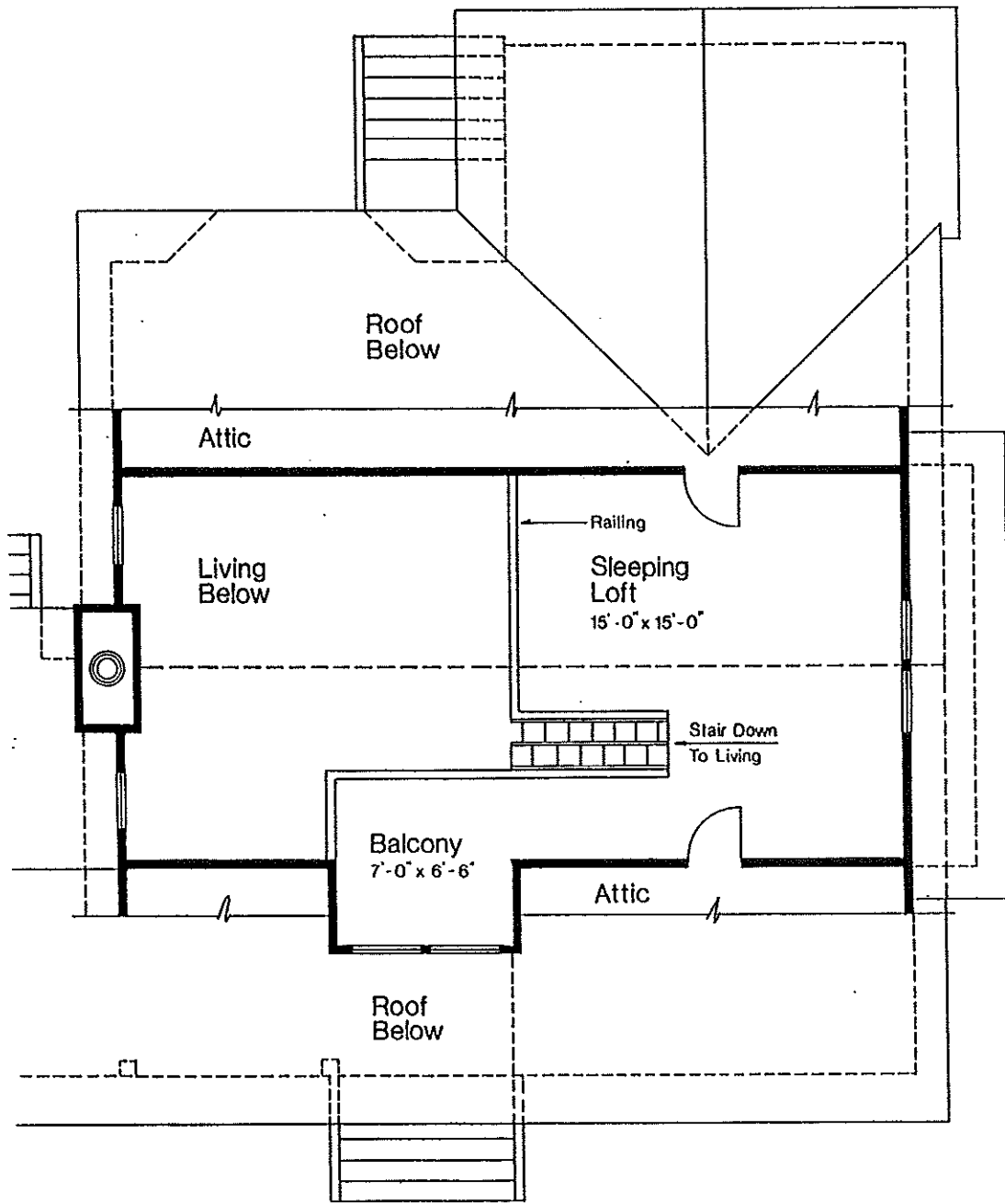
First Floor Plan





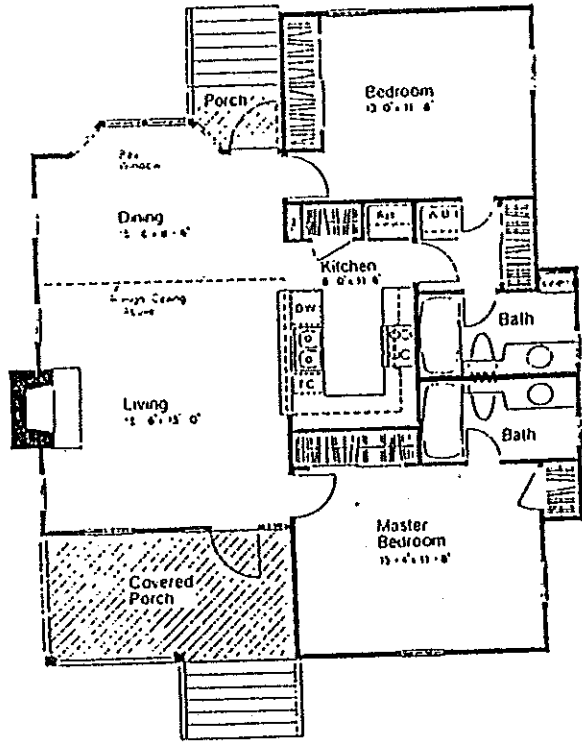
Second Floor Plan



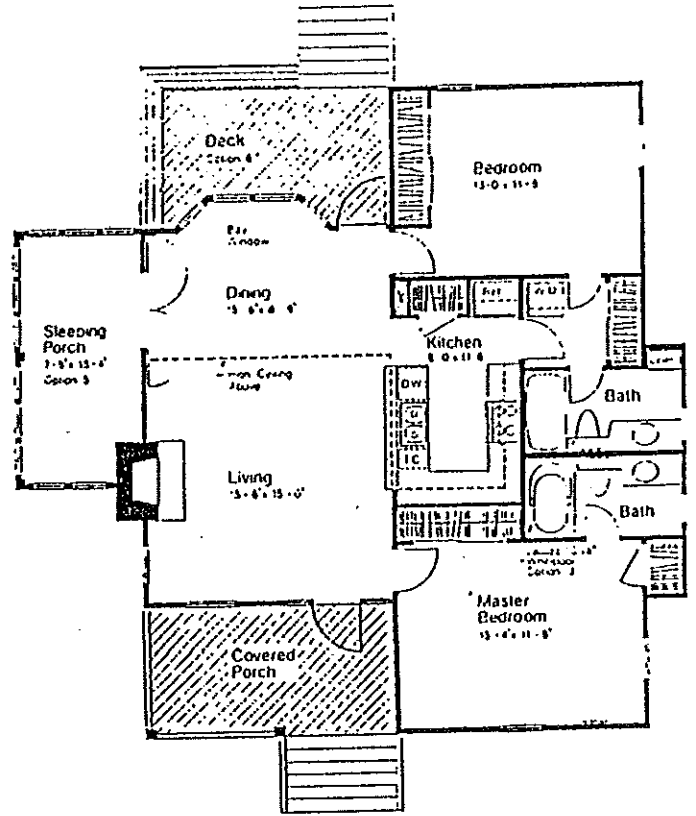


Loft Plan

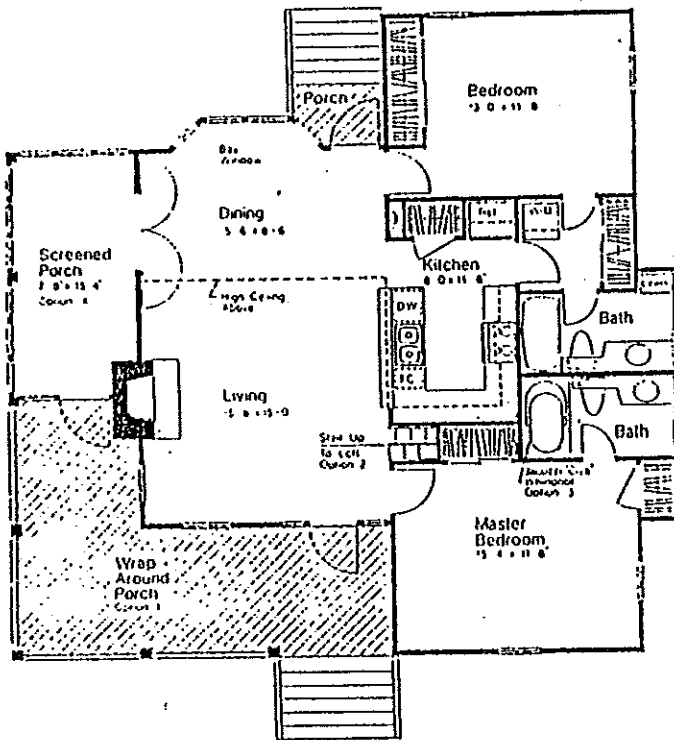




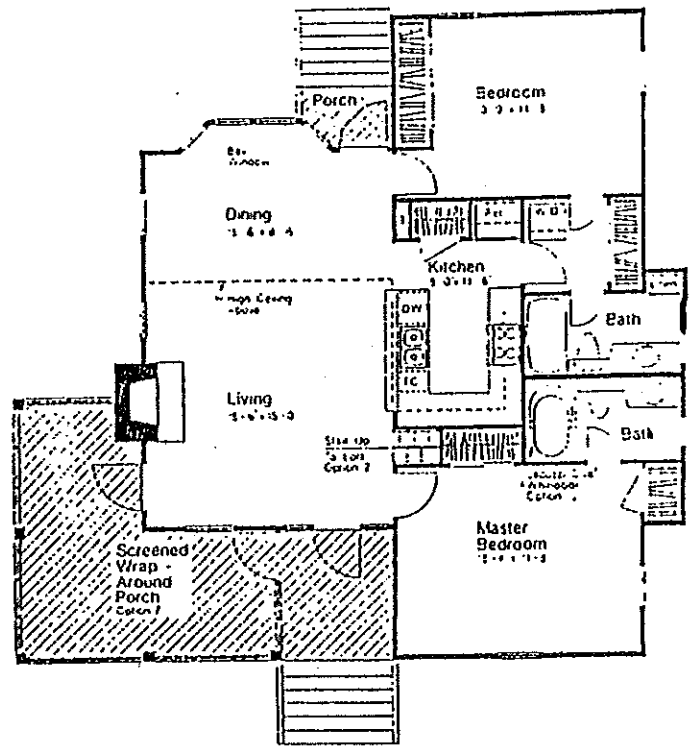
Standard Floor Plan



Optional Floor Plan



Optional Floor Plan



Optional Floor Plan